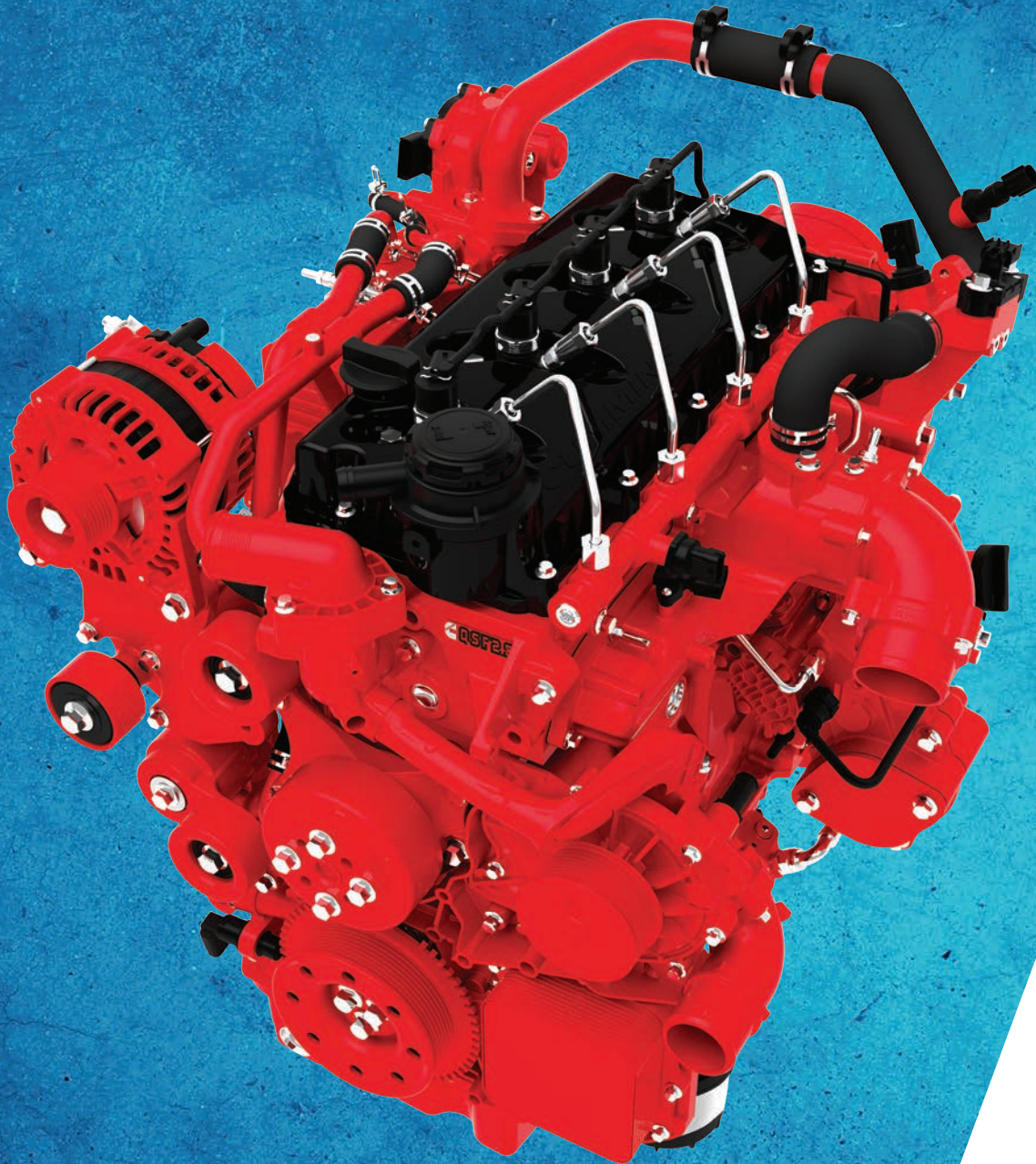


QUANTUM SERIES

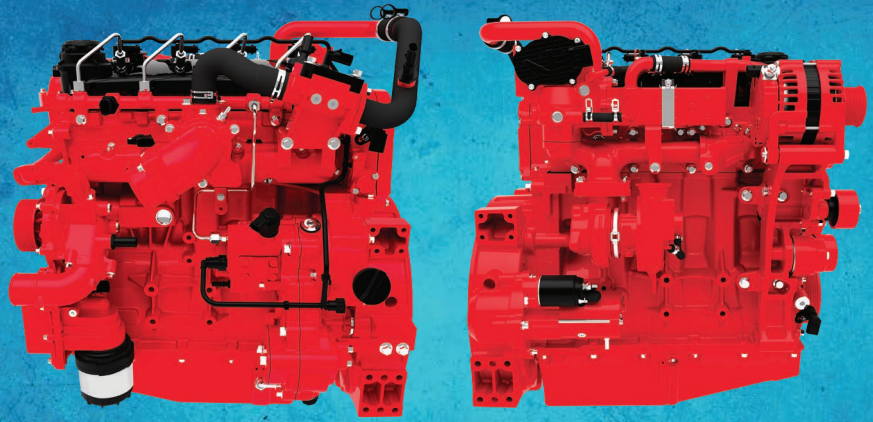
QSF2.8 TIER 4 FINAL



**FOR
A WORLD
THAT'S
ALWAYS ON™**

DELIVERING MORE FOR LESS

The QSF2.8 engine is one of the Quantum Series of engines from Cummins with innovative technology that delivers more for less.



Better. In Every Dimension.

The 2.8-liter QSF delivers performance comparable to larger engines up to 3.4 liters in a more compact package. It does this while providing durability similar to that of Cummins 4.5 liter engines. High Pressure Common Rail (HPCR) fuel injection, together with full-authority electronic controls, a Cummins wastegated turbocharger and Charged Air Cooling (CAC), combine to deliver a very impressive peak torque of 221 lb-ft (300 N•m). Cummins QSF2.8 is also available without charge air cooling, for even more compact installations.

This advanced technology enables the QSF2.8 to meet the near-zero emissions standards of Tier 4 Final using only cooled Exhaust Gas Recirculation (EGR) and our proprietary Diesel Oxidation Catalyst (DOC). The same QSF2.8 engine without the DOC meets Tier 3 emissions regulations for regions where those standards apply.

The DOC is truly “fit and forget” technology – a totally passive system that never needs any form of regeneration as required by a Diesel Particulate Filter (DPF). It also gives equipment designers the flexibility to mount components separate from the exhaust muffler or as part of a combined catalyst-and-muffler unit. Designed specifically for compact 4-cylinder applications, the DOC benefits from Cummins Emission Solutions vast experience with emissions reduction technologies.

Innovative use of composite materials, together with a sculptured cast-iron block, gives the QSF2.8 a

significant weight advantage, at a total weight of just 507 lb (230 kg).

Maintenance is made simpler through remote mounting of the Electronic Control Module (ECM) for rapid plug-in diagnostics and data downloads using electronic tools. The oil fill, lube filter and fuel filter are set up for rapid service, with 500-hour intervals.

Built to Cummins stringent manufacturing standards for use anywhere in the world, the QSF2.8 is smaller, stronger and simpler by design than any other engine with the same output, while retaining legendary reliability and durability. It is better in every dimension.

FEATURES AND BENEFITS

- Excellent power and outstanding performance; capable of 221 lb-ft at max peak torque at its top rating
- Simple, compact installation with no user interface at Tier 4 Final
- Significant weight advantage from composite parts and sculptured cast-iron block
- Proven aftertreatment solution to meet EPA Tier 4 Final regulations
- “Fit and forget” DOC is service-free
- Smaller space claim

SPECIFICATIONS

Engine Type	In-line 4-cylinder
Displacement	2.8 liters
Engine Weight (Wet)	538 lbs (244 kg)
Aftertreatment Weight	12 lbs (5.5 kg)
Fuel System	Electronic High Pressure Common Rail (HPCR) Fuel System
Air Intake	Cummins Direct Flow Air Cleaner
Turbo	Cummins Wastegate Turbo
Emissions Control	Exhaust Gas Recirculation + Diesel. Oxidation Catalyst (EGR + DOC)
Electronics	Remote Electronic Control Module (ECM)
Crankcase Filter	Open Crankcase Ventilation
Fuel Performance	BSFC Optimized for Industrial Duty Cycles

RATINGS

Engine Model	Power HP / (kW)	Peak Torque – lb-ft / N•m @ rpm
QSF2.8 74	74 (55) @ 2500	221 (300) @ 1600
QSF2.8 65	65 (48) @ 2500	199 (270) @ 1600
QSF2.8 65	65 (48) @ 2500	170 (230) @ 1600
QSF2.8 65	65 (48) @ 2200	170 (230) @ 1600
QSF2.8 49	49 (37) @ 2500	147 (200) @ 1600
QSF2.8 49	49 (37) @ 2500	140 (190) @ 1600
QSF2.8 49	49 (37) @ 2200	140 (190) @ 1600

Additional ratings may be available; contact your distributor for more information.

ANY CUSTOMER, ANY QUESTION, ANY CHANNEL, **ANY TIME.**

Cummins Care is not a typical call center. We are a solutions center helping to prevent issues, provide answers quickly and reimburse accurately. We are your connection to a whole new level of customer service, to support and deliver faster personal attention with rapid results. From the moment you engage Cummins Care, you will have access to a Cummins expert with specialized skill sets, experience and in-depth knowledge to take care of your needs.

- **CUSTOMER SERVICE**
- **WARRANTY ASSISTANCE**
- **TECHNICAL SUPPORT**
- **CONNECTED SERVICE**

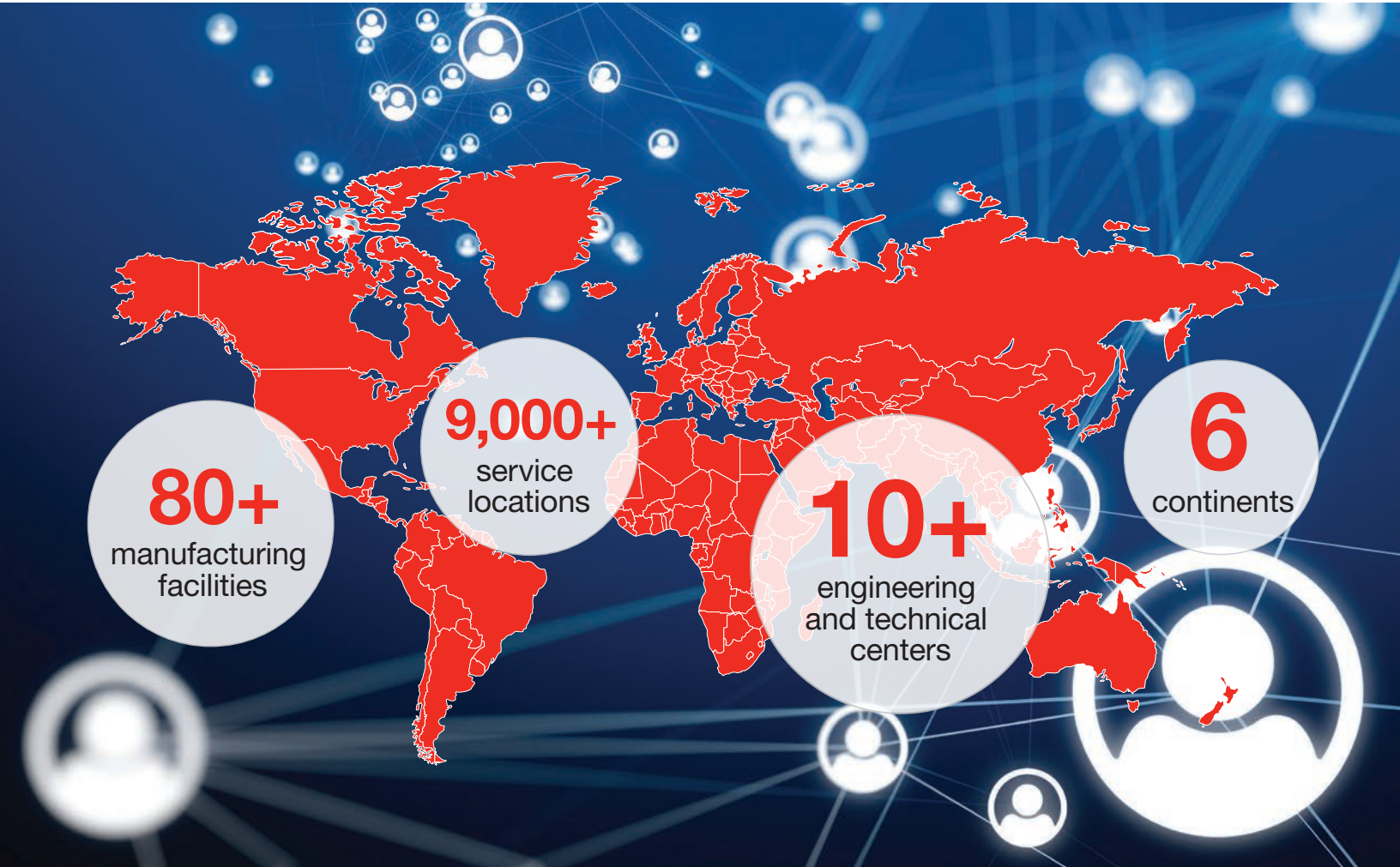
We are experts with advanced technology to make your life easier while providing a seamless support experience.

Contact us at care.cummins.com or 1-800-CUMMINS (1-800-286-6467)



GLOBAL SUPPORT NETWORK

CUMMINS' GLOBAL FOOTPRINT OF ENGINEERING, MANUFACTURING, AND SERVICE LOCATIONS MEANS WE ARE WHERE OUR CUSTOMERS NEED US TO BE.



TO FIND OUT MORE, CONTACT YOUR LOCAL DEALER OR DISTRIBUTOR VIA CUMMINS.COM/LOCATOR



Cummins Inc.
Box 3005
Columbus, IN 47202-3005
U.S.A.

cummins.com

Bulletin 6306597 Produced in U.S.A. 10/21
©2021 Cummins Inc.